

### MOUNTAIN STATS

Top Elevation: 9,350 feet  
 Base Elevation: 6,450 feet  
 Vertical Rise: 2,900 feet  
 Avg Annual Snowfall: 300 inches  
 Skiable Area: 3,000 acres



### LEGEND

Easier	Easier Way Down
Intermediate	Ski Patrol
Advanced	Caution: Cliff Area
Expert	Snowmaking
Restrooms	Slow Zone
Restaurants	Terrain Park
Rental Shop	Express Lift
Shopping	Lift
Ticket Sales	Downloading Lift
Full Bar	Low Visibility Marker*
Nordic Skiing	<small>* Follow to return to main base area.</small>

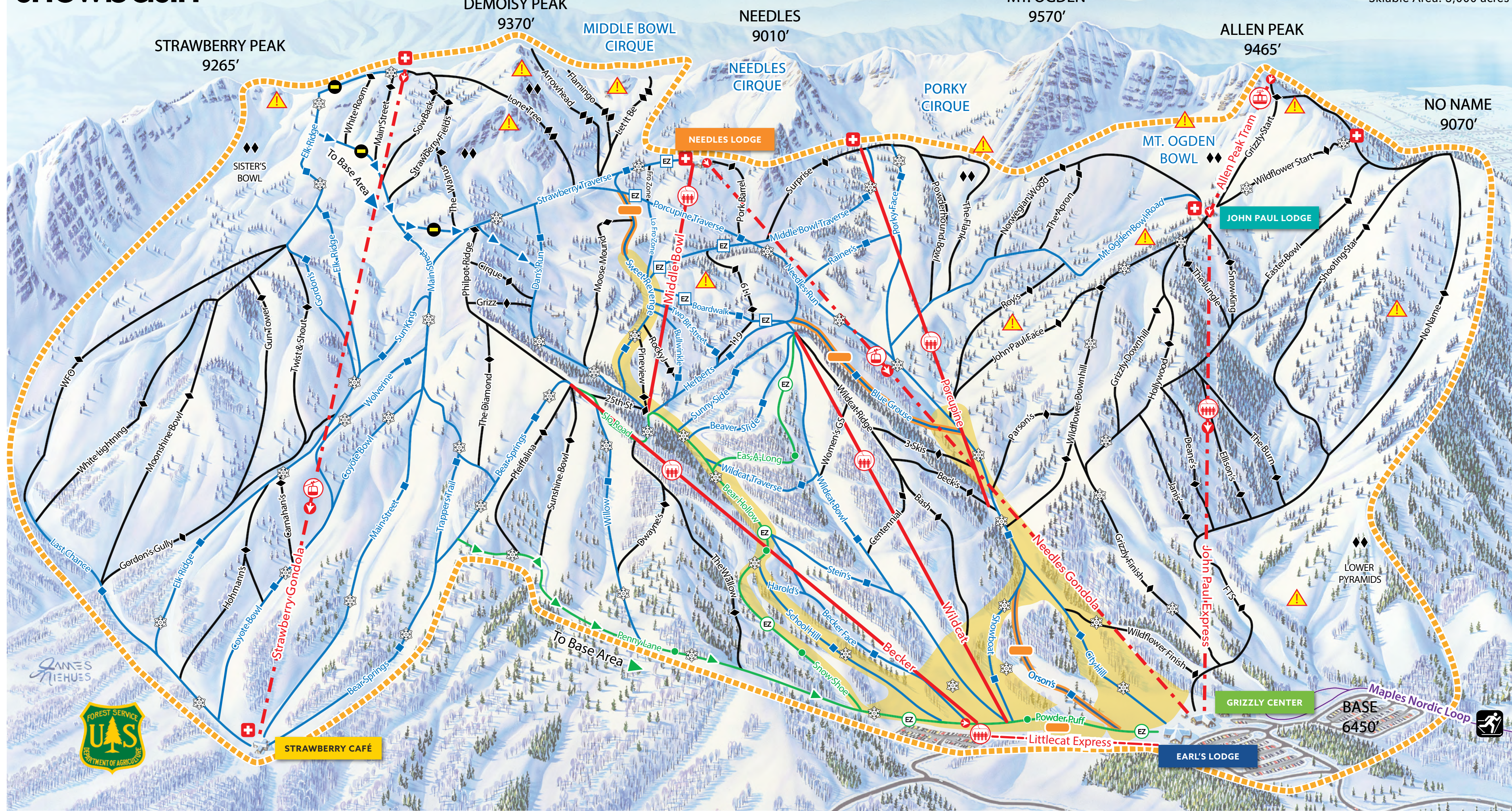
### LIFT INFORMATION

LIFT	LIFT TYPE	VERTICAL	HOURS OF OPERATION
Strawberry Gondola		2,472'	9:00am - 3:30pm
Becker		1,290'	9:00am - 4:00pm
Middle Bowl		1,100'	9:00am - 3:45pm
Wildcat		1,290'	9:00am - 4:00pm
Littlecat Express		265'	9:00am - 4:00pm
Needles Gondola		2,310'	9:00am - 4:00pm
Porcupine		1,501'	9:00am - 3:30pm
John Paul Express		2,424'	9:00am - 4:00pm
Allen Peak Tram		510'	9:00am - 3:30pm

Ski Patrol: 801.620.1017

Stay Connected:

Facebook.com/snowbasin | @snowbasinresort  
 youtube.com/snowbasinresort | #SnowbasinResort



### NEEDLES LODGE

OPEN DAILY  
9:00am - 3:00pm

- MOUNTAIN-TOP LUNCH
- OUTDOOR PATIO
- RESTROOMS
- SKI PATROL

### JOHN PAUL LODGE

OPEN DAILY  
9:00am - 3:00pm

- MOUNTAIN-TOP BREAKFAST & LUNCH
- OUTDOOR PATIO
- RESTROOMS
- SKI PATROL

### EARL'S LODGE

OPEN DAILY  
8:00am - 4:30pm

- BREAKFAST & LUNCH
- TICKETS & PASSES
- OUTDOOR PATIO
- RESTROOMS
- GUEST SERVICES
- LOST & FOUND
- ACTIVITIES DESK
- BAG CHECK

### CINNABAR

OPEN DAILY  
11:30am - 6:00pm

- LOCATED INSIDE EARL'S LODGE
- FULL SERVICE LUNCH
- FULL BAR
- LIVE MUSIC WEEKENDS & HOLIDAYS

### GRIZZLY CENTER

OPEN DAILY  
8:00am - 5:00pm

- TICKETS
- LEARNING CENTER (SNOW SPORTS SCHOOL)
- RENTALS & TUNING
- SHOPPING & SOUVENIRS

### STRAWBERRY CAFÉ

OPEN DAILY  
10:00am - 2:30pm

- GRAB & GO CAFÉ
- ESPRESSO BAR
- RESTROOMS
- SKI PATROL

