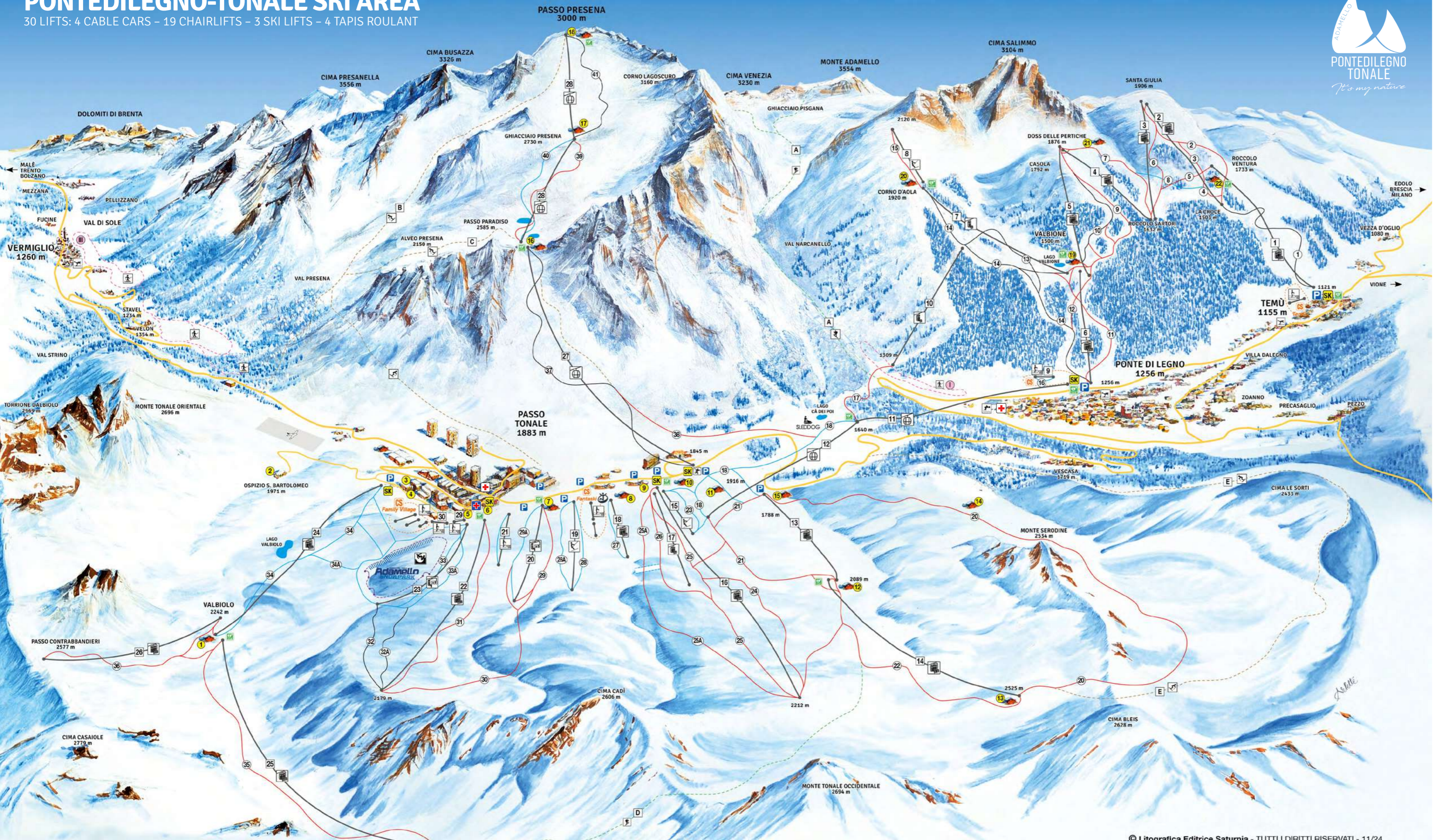


# PONTEDILEGNO-TONALE SKI AREA

30 LIFTS: 4 CABLE CARS – 19 CHAIRLIFTS – 3 SKI LIFTS – 4 TAPIS ROULANT



Lifts		Altitude		Length	Time
Id	Type	Departure	Arrival		
1	ROCCOLO VENTURA	1121	1733	1673	6'
2	LA CROCE	1503	1904	1396	5'
3	SANTA GIULIA	1632	1906	979	8'
4	DOSS DELLE PERTICHE	1632	1876	901	7'
5	CASOLA	1500	1868	1083	4'
6	VALBIONE	1258	1512	716	3'
7	CORNO D'AOLA	1514	1933	1273	9'
8	ANGELO	1928	2120	814	4'
9	CAMPO SCUOLA CIDA	1255	1275	183	2'
10	SOZZINE	1309	1725	1082	7'
11	PONTEDILEGNO - INTERMEDIA	1256	1640	2654	7'
12	INTERMEDIA - PASSO TONALE	1640	1916	2413	7'
13	NIGRIELLA	1788	2089	785	5'
14	BLEIS	2088	2525	1774	6'
15	TRE LARICI	1880	1920	320	2'
16	SERODINE	1880	2212	1323	4'
17	CADÌ SIT	1880	2035	710	5'
18	SCOIATTOLO	1880	1924	335	3'
19	PRESANELLA	1880	1920	300	2'
20	VITTORIA	1885	2044	821	5'
21	TUBBO	1890	1905	150	4'
22	ALPE ALTA	1889	2179	1356	5'
23	VALENA	1889	2013	726	2'
24	VALBIOLO	1909	2242	2125	7'
25	TONALE OCCIDENTALE	2265	2500	851	3'
26	CONTRABBANDIERI	2212	2577	1338	4'
27	PARADISO	1875	2585	1881	5'
28	PRESENA	2585	3000	2200	7'
29	DISCOVERY	1889	1907	105	4'
30	ATLANTIS	1907	1920	80	3'

Slopes		Altitude		Altitude diff.	Length
Id	Type	Departure	Arrival		
1	TEMÙ	1503	1121	382	1235
2	LA CROCE	1906	1503	403	1700
3	ROCCOLO VENTURA I	1906	1733	173	1050
4	ROCCOLO VENTURA II	1733	1503	230	880
5	ROCCOLO SARTORI	1733	1632	101	430
6	SANTA GIULIA	1632	1906	274	1230
7	DOSS DELLE PERTICHE	1876	1632	244	1150
8	CASOLA SKIWEIG	1714	1650	64	960
9	CASOLA I	1868	1500	368	1700
10	CASOLA II	1792	1500	292	1100
11	VALBIONE I	1512	1256	256	1100
12	VALBIONE II	1512	1350	162	700
13	VARIANTE CORNO D'AOLA	1727	1500	227	880
14	CORNO D'AOLA	1920	1256	664	1000
15	ANGELO	2120	1920	200	1000
16	CAMPO SCUOLA CIDA	1280	1256	24	250
17	PEGRÀ	1640	1309	331	2500
18	TONALINA	1916	1640	276	2740
20	ALPINO	2525	1788	737	4500
21	GIULIANA	2089	1788	301	2500
22	BLEIS	2525	2088	437	3000
23	TRE LARICI	1920	1880	40	320
24	SERODINE I	2212	1880	332	1800
25	SERODINE II	2212	1880	332	1800
25A	SERODINE GARA	2212	1880	332	1800
26	CADÌ SIT	2035	1880	155	810
27	SCOIATTOLO	1924	1880	44	335
28	PRESANELLA	2010	1885	125	668
28A	PRESANELLA I	2010	1885	125	668
29	VITTORIA	2044	1885	159	821
29A	VITTORIA I	2044	1885	159	821
30	CINQUE DOSSI	2179	1885	294	1900
31	ALPE ALTA	2179	1889	290	1800
32	CADÌ CAROSELLO	2179	1939	240	1300
32A	CADÌ CAROSELLO I	2179	1939	240	1300
33	VALENA	2013	1889	124	950
33A	VALENA I	2013	1889	124	950
34	VALBIOLO	2242	1909	333	2700
34A	SAN BARTOLOMEO	2030	1887	143	950
35	TONALE OCCIDENTALE	2500	2265	235	1500
36	CONTRABBANDIERI	2577	2212	365	1800
37	PARADISO	2587	1850	737	3000
38	VARIANTE PARADISO	1988	1733	255	1500
39	PRESENA PARADISO	2724	2585	139	1700
40	VARIANTE PRESENA PARADISO	2724	2585	139	2000
41	GHIACCIAIO PRESENA	3000	2724	276	1150

Freeride (B-C-E)		Altitude	Length		
Id	Type	Departure	Arrival		
B	SGUALDRINA CANTIERE	3000	1870	1130	10200
C	ALVEO PRESENA	2585	2150	435	1800
E	VEVASCIA	2602	1530	1072	9000

Alpine tours only with ski mountaineering equipment		Altitude	Length		
Id	Type	Departure	Arrival		
A	PISGANA	3000	1352	1648	16000
D	LUNARALLY	2500	2500	194	1800

Tours not maintained and not guarded, for expert skiers only.

Cross country skiing		Altitude	Length		
Id	Type	Departure	Arrival		
I	VALSOZZINE	1250	1250	120	5 km
III	VERMIGLIO	1180	1180	245	30 km

Skipass Offices  
 Local Doctor on call  
 Ski Camps  
 Cardio-protected ski resort

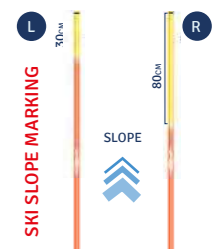
**Alp Trauma Clinic Dr. Pizzolla Trauma center**  
 via Circonvallazione, 1, Passo Tonale  
 +39 0463 893029  
 www.alptrauclinic.com  
 info@dottpizzolla.it

**SLOPE RESCUE call 112**

The slope rescue is only ensured on the pistes from n. 1 to n. 41, up to 15 minutes after the closing of the lifts.

The connections among the slopes will be opportunely shown and only on the marked course the rescue team will be ensured.

The lifts companies do not ensure the rescue team outside the marked courses.



All slopes with snow making facilities.

# TI ASSICURA, DA CIMA A FONDO.

Request Snowcare with your skipass!



**Snowcare**  
ASSICURAZIONE SCI E SNOWBOARD

24h assistance.com

3€  
AL GIORNO

## Guarantees

Mandatory Third-party liability	150.000€ personal injury 10.000€ property damage Minimum 500€ Excess 10%
<b>Included in the price</b>	
Medical second opinion <b>NEW</b>	Full price
Emergency medical expenses	500€
Private chauffeur service	Full price
First aid on Italian slopes	250€ on slopes 1.000€ helicopter
First aid on non-Italian slopes	400€ on slopes 5.000€ helicopter
<b>For skipass with name and photo</b>	
Cancellation of skipass not used due to accident, illness or quarantine	Unused part
Cancellation of skiing lessons and/or ski equipment hire due to accident	100€/day Fixed excess 50€
Repatriation for medical reasons	5.000€

## Limits

Warning: always keep your skipass with you! The Snowcare insurance is linked with your skipass and is only valid in the event of request and intervention by the rescue services at the scene of the accident on the ski runs.



SCAN FOR ADDITIONAL INFO



The guarantees of the insurance policy Snowcare are completely provided by Axeria Iard S.A. Pre-contractual and contractual documents (which include restrictions and exclusions to the insurance coverage, as well as the obligations of the Contracting party and the Beneficiary) are provided at the ticket offices. Information issued pursuant to current IVASS regulations.

## Welcome!



Our most precious resource is waiting for you.

Please, ski carefully and respect seriously the international ski slopes rules, in order to enjoy your skiing days.

Our marked and signed slopes are arranged and checked daily after the closing of the lifts. We remind you that skiing off-piste is at your own risk!

Ski slopes are closed every day (except from scheduled night skiing) from 5 p.m. to 8 a.m. In these hours it is strictly forbidden to walk on the ski slopes, to cross them and to take along dogs because it might be very dangerous for your life due to the presence of ruts, winch ropes, exposed cables and hoses of snow making machines.

Be careful and do not open chairlift bars too early when entering the upper station.

## The 10 F.I.S. rules

- 1 A skier or snowboarder must behave in such a way that he does not endanger or prejudice others.
- 2 Control your direction and speed of travel, taking account of the terrain, snow, weather and traffic conditions.
- 3 Select an appropriate path. If you are skiing behind someone it's your responsibility to ski around him without causing any danger to him.
- 4 You can overtake from either left or right but you must leave enough distance between yourself and other skiers to allow them to manoeuvre properly.
- 5 Before starting off or pulling out you must look up and down the slope and choose an appropriate moment to execute your manoeuvre, so as not to endanger yourself or other skiers.
- 6 Avoid stopping at blind corners or narrow or enclosed places unless you have to (i.e. you're injured). In case of an injury you must vacate the spot as soon as practicable, to avoid further danger (to yourself or others). You should always stop at the side of the ski slope.
- 7 You must always use the side of the ski slope to walk up or down, whether with or without skis on.
- 8 Observe and respect the signs, markings and notices on the ski slopes.
- 9 You are obliged by law to offer help and assistance in case of accident.
- 10 You are also obliged by law to give your personal details in case of accident, whether you caused it, witnessed it or assisted at it.

## Night skiing



Four days a week it is possible to ski under the stars on two perfectly lit tracks: the slope Valena in Passo Tonale and the slope Valbione in Ponte di Legno.

When the sun goes down, become a night-time skier!

Find out more on [pontedilegnotonale.com](http://pontedilegnotonale.com)

## Fun Kids evening



Enjoy an entertaining and happy evening with your family: races on the snow, face painting and baby torchlight descent.

The Fun Kids evenings take place every week both in Ponte di Legno and Passo Tonale.

Find out more on [pontedilegnotonale.com](http://pontedilegnotonale.com)

## Download our app



Download our app Pontedilegno-Tonale Official. Don't forget to add the skipass code to your profile: in case of loss you just pay € 5,00 for the k-card deposit for the first duplicate (the duplicate of hourly and 1-2 days skipass is not available).

## Skipass Offices

[info@pontedilegnotonale.com](mailto:info@pontedilegnotonale.com)

**PONTE DI LEGNO**  
+39 0364 900628 - 92097

**PASSO TONALE**  
+39 0364 92066 - 903976

at CHAIRLIFT VALBIOLO  
+39 0364 1951791

at CHAIRLIFT SERODINE  
+39 0364 903813

at CABLECAR PARADISO  
+39 0364 91355

**TEMÙ**  
at CHAIRLIFT ROCCOLO V.  
+39 0364 906084

## Ski and snowboard schools

**PONTE DI LEGNO-TONALE**  
+39 0364 91301  
[www.scuolascipontetonale.com](http://www.scuolascipontetonale.com)

**TONALE-PRESENA**  
+39 0364 903991  
[www.scuolasci-tonalepresena.it](http://www.scuolasci-tonalepresena.it)

**PONTELEGNO SKI SCHOOL**  
+39 0364 900302  
[www.scuolascipontedilegno.com](http://www.scuolascipontedilegno.com)

**EVOLUTION SKI SCHOOL**  
+39 342 3987853  
[www.evolutioniskischooltonale.it](http://www.evolutioniskischooltonale.it)

## Ski lift companies

**S.I.T**  
+39 0364 91172

**S.IN.VAL**  
+39 0364 91076

**CAROSSELLO TONALE**  
+39 0364 903767



Our most precious resource is waiting for you.

[pontedilegnotonale.com](http://pontedilegnotonale.com)

## Mountain huts and Restaurants

### PASSO TONALE

- 1 MALGA VALBIOLO Bar Ristorante self-service Pizzeria Arrival Chairlift Valbionale +39 0463 896079 | +39 338 4958621 [www.rifugiopassotonale.it](http://www.rifugiopassotonale.it) | [info@rifugiopresena.it](mailto:info@rifugiopresena.it)
- 2 LA MIRANDOLA DIMORA STORICA Bar-Ristorante Slope Valbionale, Loc. Ospizio +39 0364 903933 [www.hotel-lamirandola.it](http://www.hotel-lamirandola.it) | [info@lamirandolahotel.it](mailto:info@lamirandolahotel.it)
- 3 PALLA DI NEVE Ristorante Pizzeria Start Chairlift Valbionale +39 0364 903918 [www.appartamentimiriam.it](http://www.appartamentimiriam.it) | [info@appartamentimiriam.it](mailto:info@appartamentimiriam.it)
- 4 GAZANA Bar Food Drink Après Ski Start Chairlift Valbionale +39 0364 903424 [www.sportinghotel.com](http://www.sportinghotel.com) | [gazanabartonale@gmail.com](mailto:gazanabartonale@gmail.com)
- 5 MAGIC PUB SKI BURGER Start Chairlift Valena +39 348 8902941 [fede.alice@yahoo.it](mailto:fede.alice@yahoo.it)
- 6 REDIVAL Bar Risto-self Pizzeria Après Ski Start Chairlift Valena +39 0364 770080 [redivalpassotonale@gmail.com](mailto:redivalpassotonale@gmail.com)
- 7 LA BARACCA Ristorante Après Ski Start Chairlift Vittoria +39 0364 91076 | +39 335 6746118 [www.labaraccapassotonale.com](http://www.labaraccapassotonale.com) | [info@labaraccapassotonale.com](mailto:info@labaraccapassotonale.com)
- 8 RODODENDRO Bar Self-service Pizzeria Start Chairlift Cadi Sit +39 0364 900259 [cecilia\\_2007@libero.it](mailto:cecilia_2007@libero.it)
- 9 SERODINE Bar Ristorante self-service Start Chairlift Serodine +39 0364 903724 | +39 339 8611947 | +39 335 265341 [serodineselfservice@gmail.com](mailto:serodineselfservice@gmail.com)
- 10 SKI FOOD Start Skilift Tre Larieti at Grand Hotel Paradiso +39 0364 904800 [www.centro-paradiso.it](http://www.centro-paradiso.it) | [info@centro-paradiso.it](mailto:info@centro-paradiso.it)
- 11 CHALET IL FAITA Ristorante Between Slope Giuliana and Tonalina +39 335 5818719 [www.ilfaita.it](http://www.ilfaita.it) | [info@ilfaita.it](mailto:info@ilfaita.it)
- 12 NIGRITELLA Bar Ristorante self-service Arrival Chairlift Nigritella +39 345 9565251 [www.rifugionigritella.com](http://www.rifugionigritella.com) | [info@rifugionigritella.com](mailto:info@rifugionigritella.com)
- 13 RIFUGIO CAPANNA BLEIS Arrival Chairlift Bleis +39 335 7094812 [cecilia\\_2007@libero.it](mailto:cecilia_2007@libero.it)
- 14 MALGA CAMPELLO Snow Bar Slope Alpino +39 346 3502372 | +39 339 1647442 [malgacampello@gmail.com](mailto:malgacampello@gmail.com)
- 15 FIORI PISTA Ristorante Start Chairlift Nigritella at Hotel Bezzi +39 366 2648602 [www.hotelbezzi.com](http://www.hotelbezzi.com) | [info@hotelbezzi.com](mailto:info@hotelbezzi.com)
- 16 PASSO PARADISO Ristorante Bar Arrival Cable car Paradiso +39 0463 808002 | +39 338 4958621 [www.rifugiopassotonale.it](http://www.rifugiopassotonale.it) | [info@rifugiopresena.it](mailto:info@rifugiopresena.it)
- 17 CAPANNA PRESENA Ristorante Bar & Mountain Spa Middle station Cable car Presena +39 0463 808001 | +39 338 4958621 [www.capannapresena.com](http://www.capannapresena.com) | [www.rifugiopassotonale.it](http://www.rifugiopassotonale.it) | [info@rifugiopresena.it](mailto:info@rifugiopresena.it)
- 18 PANORAMA 3000 GLACIER Arrival Cable car Presena +39 0463 808001 | +39 338 4958621 [www.rifugiopassotonale.it](http://www.rifugiopassotonale.it) | [info@rifugiopresena.it](mailto:info@rifugiopresena.it)

### PONTE DI LEGNO

- 19 CAPANNA VALBIONE Ristorante Bar Arrival Chairlift Valbionale +39 0364 92324 [www.capannavalbione.com](http://www.capannavalbione.com) | [info@capannavalbione.com](mailto:info@capannavalbione.com)
- 20 RIFUGIO PETIT PIERRE Arrival Chairlift Corno d'Aola +39 0364 91022 | +39 339 7481915 [www.rifugiocornodaola.it](http://www.rifugiocornodaola.it) | [info@rifugiocornodaola.it](mailto:info@rifugiocornodaola.it)

### TEMÙ

- 21 LA MARALSINA Ski Bar Ristorante Slope Doss delle Pertiche +39 0364 1730695 [lamaralsina@libero.it](mailto:lamaralsina@libero.it)
- 22 RIFUGIO ROCCOLO VENTURA Arrival Chairlift Roccolo Ventura +39 0364 088080 [www.rifugioroccolo.it](http://www.rifugioroccolo.it) | [rifugioroccolo@gmail.com](mailto:rifugioroccolo@gmail.com)

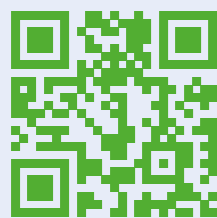


NEW

## OPERATIONS CENTER

+39 02 20564 441

[whatsapp.24hassistance.com](https://www.whatsapp.com/chat?phone_number=390220564441)



## DO YOU NEED TO REPORT A CLAIM OR REQUEST A REIMBURSEMENT?

Scan the QR code and do everything directly online



## The online insurance for your offline passions

Choose 24HASSISTANCE.COM, the online insurance close to your passions, all day, every day. Mobility, hobbies, pets, every passion deserves insurance protection.

Every passion deserves insurance protection.



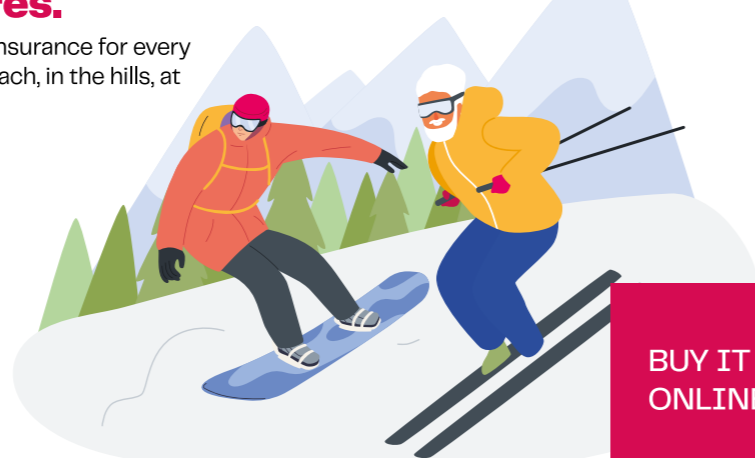
Choose the coverage for you or your family.

46 € INDIVIDUAL ONE YEAR

93 € FAMILIAR ONE YEAR

## Perfect for winter holidays. But also for spring and summer adventures.

Choose MULTISPORT, the perfect insurance for every type of sport: on the snow, at the beach, in the hills, at the gym, playing soccer, anywhere.



BUY IT ONLINE!



## Want to be up to date?

On our website you can find all the info to get the best from every single day of holiday in our ski resort!

News, events, useful info about the ski season, concerts and ski races, the tips to enjoy the resort all year long. You will also find out how to get discounts on the skipass and other exciting experiences on the snow. Have a look at our webcam to feel always at home and don't forget to follow us on our social media!



[pontedilegnotonale.com](http://pontedilegnotonale.com)